



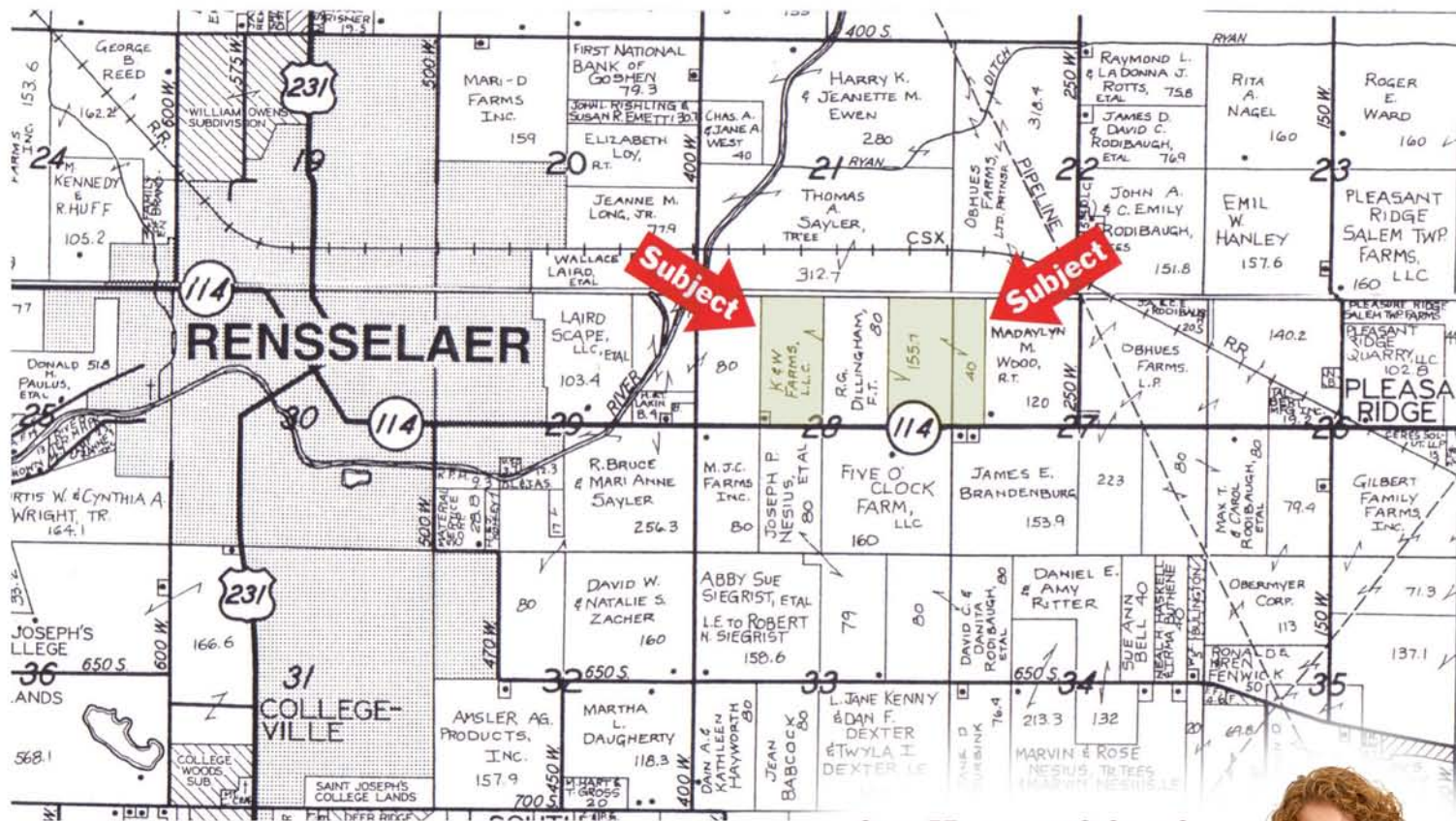
HAGEMAN REALTY

4746 W. U.S. Hwy. 24 • Remington, Indiana 47977
Phone: (219) 261-2657 • (219) 261-2000 • Fax: (219) 261-2220
www.hagemanrealty.com

HAGEMAN REALTY proudly presents

K&W Farms Jasper County, Indiana

TOTAL ACRES: 195.69
TILLABLE ACRES: 194.9
LOCATION: Approx. 2 miles east of Rensselaer on Hwy 114
IMPROVEMENTS: None
ASKING PRICE: \$1,213,340.00
TERMS: Cash
REAL ESTATE TAXES: \$2,011.08/year



Sara Hageman Schenck
sarahageman@hagemanrealty.com

4746 W. US Hwy 24
Remington, IN 47977
219.261.2000 ext 191
765.366.1212 cell
219.261.2220 fax





HAGEMAN REALTY proudly presents

K&W Farms Jasper County, Indiana

DRAINAGE:

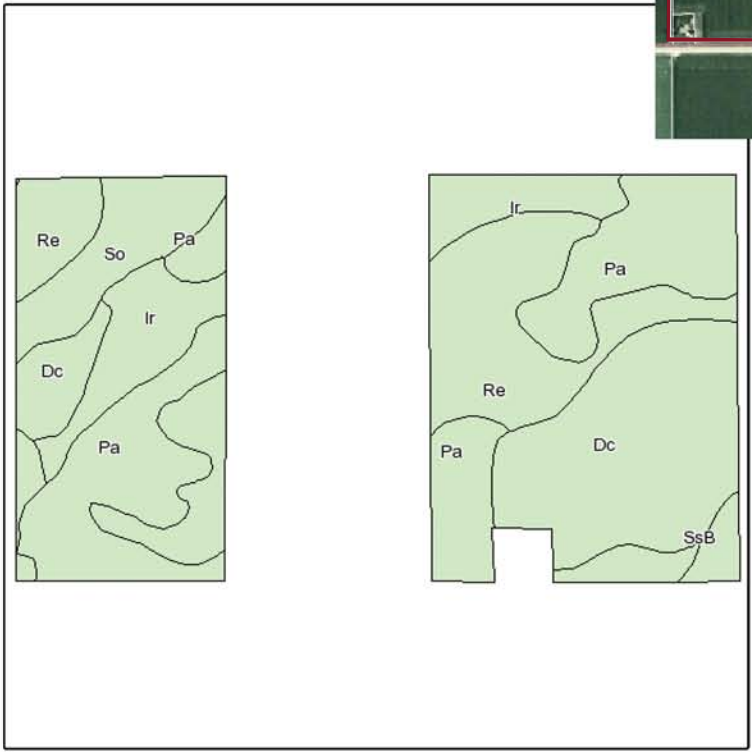
Underground tile, ditch and natural

FSA INFORMATION:

Corn Base: Yield:
 97.6 acres 107 bu/ac

PRIMARY SOILS:

Rensselaer, Iroquois, Papineau, Darroch,
 Sparta, Sloan



Code	Soil Description	Acres	Percent of field	Non-Irr Class	Corn	Grass legume hay	Pasture	Soybeans	Winter wheat
Pa	Papineau sandy loam	60.4	31.1%	Ilw	135	4.5	9	47	54
Dc	Darroch loam	47.1	24.3%	Ilw	130	4.3	8.6	46	52
Re	Rensselaer loam	36.5	18.8%	Ilw	146	4.9	9.7	51	59
Ir	Iroquois fine sandy loam	30.6	15.8%	Ilw	140	4.6	9.2	49	56
So	Sloan silt loam, frequently flooded, undrained	15.9	8.2%	Vw					
SsB	Sparta loamy sand, loamy substratum, 1 to 3 percent slopes	3.3	1.7%	Ills	80	2.6	5.2	28	36
Weighted Average					124.5	4.1	8.3	43.6	50